



Crothall Close, Palmers Green, London, N13  
Chain Free £649,995 Freehold

**Anthony Webb**  
ESTATE AGENTS

# Crothall Close, Palmers Green, London, N13

A chain free three bedroom (originally built as a four bedroom) link detached (attached via garage) house built in the late 80s located in this quiet residential cul-de-sac.

Crothall Close is located off Fox Lane and is well positioned for Palmers Green's shops, restaurants, bus routes and mainline station into Moorgate. Southgate high road and underground station are a short ride away via the W9 bus route. Both Broomfield and Grovelands parks are within easy walking distance.

Entrance Hallway with ground floor w.c • Spacious living room with bay window • Dining Room • Conservatory • Kitchen with large storage cupboard • Utility room with door to garden and garage • First floor landing with access to loft • Main bedroom to front with en-suite shower room • Second double bedroom with fitted wardrobe • Single third bedroom • Family bathroom • Off street parking • Garage to side • Mature rear garden with side access measuring 36ft x 32ft.

Enfield Council Tax band F

- Three bedrooms
- Linked detached house
- Two receptions
- Kitchen
- Utility room
- Quiet cul-de-sac location
- Off street parking+garage
- Rear garden





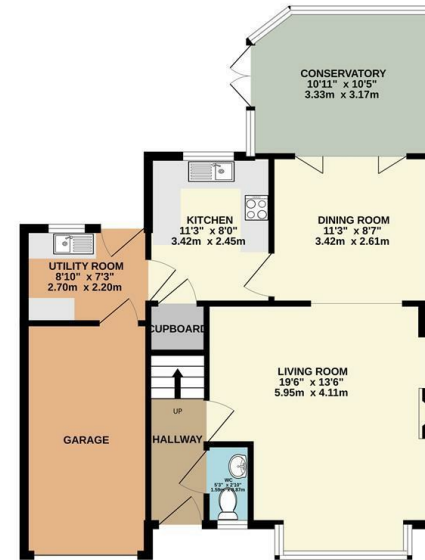
# Crothall Close Palmers Green London N13 4BN

Tenure: Freehold  
Gross Internal Area: 1169.00 sq ft

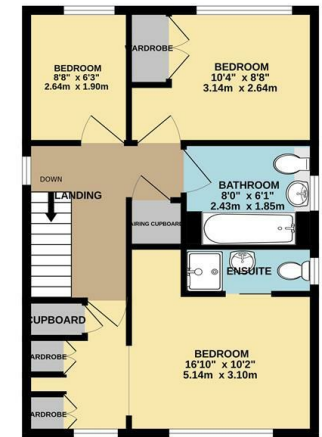


Energy Efficiency Rating		Current	Potential
Very energy efficient - lower running costs			
(92 plus) A			
(81-91) B			
(69-80) C			
(55-68) D			
(39-54) E			
(17-38) F			
(1-20) G			
Not energy efficient - higher running costs			
England & Wales		EU Directive 2002/91/EC	
Environmental Impact (CO <sub>2</sub> ) Rating		Current	Potential
Very environmentally friendly - lower CO <sub>2</sub> emissions			
(92 plus) A			
(81-91) B			
(69-80) C			
(55-68) D			
(39-54) E			
(21-38) F			
(1-20) G			
Not environmentally friendly - higher CO <sub>2</sub> emissions			
England & Wales		EU Directive 2002/91/EC	

GROUND FLOOR  
684 sq.ft. (63.5 sq.m.) approx.



1ST FLOOR  
485 sq.ft. (45.1 sq.m.) approx.



TOTAL FLOOR AREA: 1169 sq.ft. (108.6 sq.m.) approx.  
Whilst every attempt has been made to ensure the accuracy of the floorplan contained here, measurements of doors, windows, rooms and any other items are approximate and no responsibility is taken for any error, omission or mis-statement. This plan is for illustrative purposes only and should be used as such by any prospective purchaser. The services, systems and appliances shown have not been tested and no guarantee as to their operability or efficiency can be given.  
Made with Metropix C2022

Property particulars as supplied by Anthony Webb Estate Agents are set out as a general outline in accordance with the Property Misdescriptions Act (1991) only for the guidance of intending purchasers of lessees, and do not constitute any part of an offer or contract. Details are given without any responsibility, and any intending purchasers, lessees or third parties should not rely on them as inspection or otherwise as to the correctness of each of them. We have not carried out a structural survey and the services, appliances and specific fittings have not been tested. All photographs, measurements, floor plans and distances referred to are given as a guide only and should not be relied upon for the purchase of carpets or any other fixtures statements or representations of fact, but must satisfy themselves by or of fittings, gardens, roof terraces, balconies and communal gardens as well as tenure and lease details cannot have their accuracy guaranteed for intending purchasers. Lease details, service ground rent (where applicable) are given as a guide only and should be checked and confirmed by your solicitor prior to exchange of contracts. no person in the employment of Anthony Webb has any authority to make any representation or warranty whatever in relation to this property.

348 Green Lanes, Palmers Green, London N13 5TJ  
020 8882 7888  
palmersgreen@anthonywebb.co.uk  
anthonywebb.co.uk

**Anthony Webb**  
ESTATE AGENTS